



# MONTHLY MEMBERSHIP PROGRESS REPORT

District 27 C2

Results as of: 05/31/2019

GMT: OPEN

LOCATION WISCONSIN

GMT CA

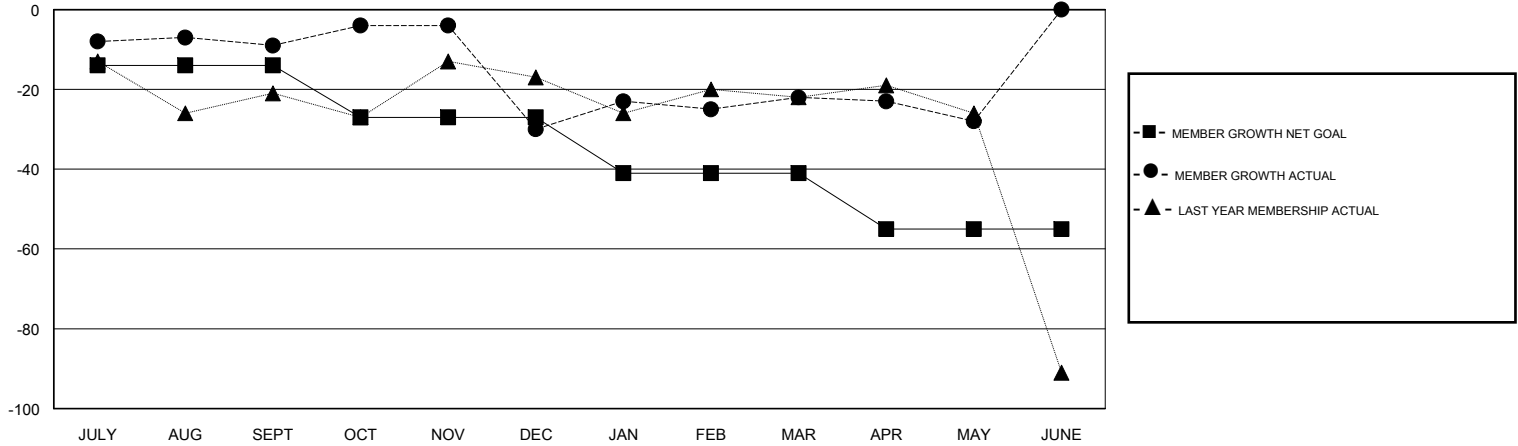
Clubs			
RESULTS FOR 2018-2019			
QUARTER	NEW CLUB GOAL	NEW CLUBS	DROPPED CLUBS
JULY/AUG/SEPT	0	0	2
OCT/NOV/DEC	0	0	0
JAN/FEB/MAR	0	0	1
APR/MAY/JUNE	0	0	0

Members			
RESULTS FOR 2018-2019			
QUARTER	MEMBER GROWTH NET GOAL	MEMBER GROWTH ACTUAL	DROPPED MEMBERS ACTUAL (including transfers)
JULY/AUG/SEPT	-14	18	25
OCT/NOV/DEC	-13	23	42
JAN/FEB/MAR	-14	35	23
APR/MAY/JUNE	-14	8	13

GOALS AND ACTUAL NEW CLUBS CUMULATIVE



GOALS AND ACTUAL MEMBERS CUMULATIVE



DROPPED CLUBS: 3	25 CLUBS OF 44 ADDED 1 OR MORE NEW MEMBERS	<u>GENDER DISTRIBUTION</u> MALE 1,036 (74.16%) FEMALE 361 (25.84%) Women Percentage Fiscal Year Goal: 29%
<u>DROPPED MEMBERS</u> DECEASED 21 CLUB CANCELLED 0 OTHER 81 TOTAL 102	<a href="#">CLICK HERE FOR CUMULATIVE MEMBERSHIP DATA</a>	TOTAL FAMILY UNIT MEMBERS 347 FAMILY MEMBERS PAYING HALF DUES 175